



Prices valid from 01 February 2023

Colorsource press-setting applications price list

Save a lot of time and money with Colorsource applications!

| APPLICATION | Description | FOB Unit Price excl. VAT | Number of licenses | Your Computer ID* (Please specify one Computer ID per license) |
|--|---|------------------------------|--------------------------|---|
| MagicPress For press use | Optimal CMYK densities setting for Offset, Gravure and Flexo presses, including ISO 12647-2-3-4-6 standards. Also allows proofs and prints quality control. | 420,00 € | | |
| MagicPress N-Colors option For press use | Allows setting optimal densities on any 1 to 10 colors press with up to ten CMYK and/or non CMYK inks. | 210,00 € | | This option can be added at any moment |
| MagicPrepress For prepress use | Optimal CMYK correction curves computing and updating for Offset, Gravure and Flexo presses, including ISO 12647-2-3-4-6 standards. Also allows proofs and prints quality control. | 740,00 € | | |
| MagicPrepress N-Colors option For prepress use | Allows computing the correction curves on any 1 to 10 colors press with up to ten CMYK and/or non CMYK inks. | 370,00 € | | This option can be added at any moment |
| Magic_Proof_&_Print_Control For prepress and press use | All color proofs quality control. | Free 0 € | | |
| MPPC Print control option For prepress and press use | Allows all color prints quality control including solid inks densities and dot gain/TVI curves. | 110,00 € | | This option can be added at any moment |
| PLATE For prepress use | Offset plates control and calibration. | 280,00 € | | |
| Annual support and maintenance | Gives free software updates, software upgrades and software support | 15% of software value | | |



Computing each ink gravure curves for each press, each paper and each screening is a routine operation that is the core work of any Print House, and should be done frequently. Some Companies only do it once per year at great expenses, by using their press supplier services - or only when they are in deep trouble and they have wasted a lot of time and money with bad print runs - which is nonsense!

Generally, you do not need more than one PLATE or MagicPrepress license on a same Printing Site: Because you can share it between all your presses on a same fix or laptop PC. The PC running your prepress workflow software is perfect.

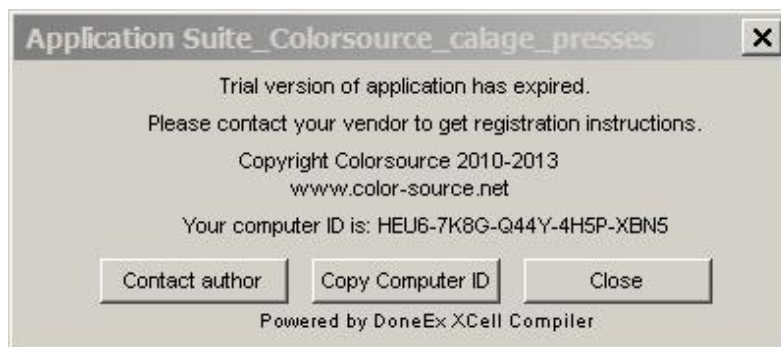
You can be interested by more than one **MagicPress** license, because **MagicPress** is quite useful on each press for each single press setting: When used with fast and inexpensive equipment's such as X-Rite Eye-One Pro 1 or 2 or 3, (or other modern scanning spectrophotometers such as Techkon or Konica-Minolta provided they can deliver CGATS measurement files), **MagicPress** is an excellent and very competitive replacements for all densitometers and expensive and unproductive pressroom hand-held spectrophotometers.

(*) Determining your Computer ID(s):

For determining the computer ID of a PC where you want to run a Colorsource application, install the application on the PC and launch it.

A box will be displayed allowing you to copy your computer ID to Windows Clipboard, or alternatively generate an e-mail containing this computer ID.

For example, hereafter is the box displayed if you launch a demo version of the application that has expired:



Press the "**Copy Computer ID**" button, and then **Paste** ("Ctrl V") to any text file: (This will paste HEU6-7K8G-Q44Y-4H5P-XBN5 computer ID on above example).

Please send this order form to sales@color-source.net

We shall send you back the formal price quotation matching your request.

Thanks for your confidence!

Colorsource