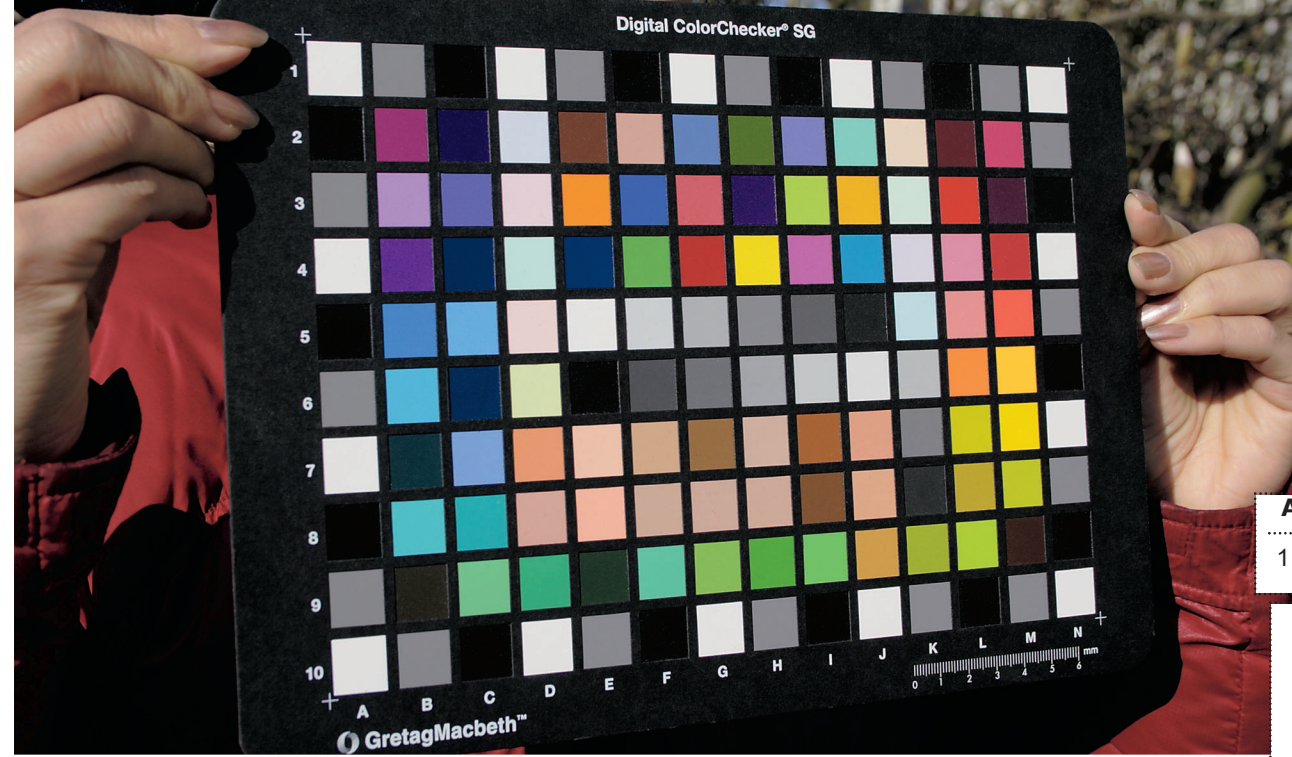


34 x 45 cm v1.4

You can use and distribute this test form if unchanged. All pictures are subject to Colorsourc Copyright.



### SRA3 Portrait

Corps 9 - Corps 9  
 Corps 8 - Corps 8  
 Corps 7 - Corps 7  
 Corps 6 - Corps 6  
 Corps 5 - Corps 5  
 Corps 4 - Corps 4  
 Corps 3 - Corps 3

Corps 9 - Corps 9  
 Corps 8 - Corps 8  
 Corps 7 - Corps 7  
 Corps 6 - Corps 6  
 Corps 5 - Corps 5  
 Corps 4 - Corps 4  
 Corps 3 - Corps 3

0.125 0.25 0.50 0.75 1 2 3 4 5

ISOcoated\_v2 - D50  
 Gris neutres MaxK - NoK

Max K No K

L = 25  
 L = 50  
 L = 75

Visual control: Check bellow high density and low density patches using a magnifier, in order to check small tones and maximal usable black or else ink limits to use in your CMYK ICC profiles:

10% 9 8 7 6 5 4 3 2 1 0 100 99 98 97 96 95 94 93 92 91 90%

Check visually Cyan % are pure: Check visually Magenta % are pure: Check visually Yellow % are pure: Check visually Black % are pure:

All-in one chart for MagicPress and MagicPrepress applications: Place it easily on any production run using sheet fed or continuous print technologies.

1

Colorsourc ISO 12647-2-3-4-6-7 Print and Proof free Color Quality control bar: Can be freely incorporated into your CMYK print and proofs, and checked using your free Colorsourc CMYK\_Print\_and\_Proof application.

1 2 3



**Step 2:** Bellow CMYK chart spectral data should be measured using X-Rite i1Pro 1, 2 or 3, or Techkon or Konica-Minolta 45/0° scanning spectrophotometers, after you have properly set your solid inks CMYK densities with MagicPress. You should measure this test chart on many good copies before you save the spectral measurements file. And then open it with MagicPrepress application:

90 60 30 100 70 40 10 80 50 20 90 60 30 100 70 40 10

1 2 3

**COLORSOURCE**  
 Color separation are ISOcoated\_v2 with 300% maximal total coverage. Gray patches for visual control are only valid on thick matte or glossy coated paper with D50 light.



**Step 0:** Check and/or calibrate your printing formes. For lithographic offset plates you can first produce only the black plate and use Colorsourc PLATE software:

0% 10% 20% 30% 40% 50% 60% 70% 80% 90% 100%

1

Check your 50% geometrical dot area with a magnifier or measure your offset plates model N-Factor:

40% 70%



**Step 1:** Measure one of the two CMYK charts bellow as spectral data for MagicPress application. First chart is OK for setting your solid inks densities matching any ISO12647-2-3-4-6 standard and controlling your superimpositions. We recommend using the second chart if you want to create your own CMYK standard, because its CMYK% patches allow you monitoring the CMYK print contrasts while you increase your solid CMYK inks densities.

1

1

