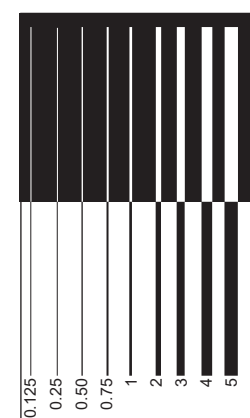


# SRA3



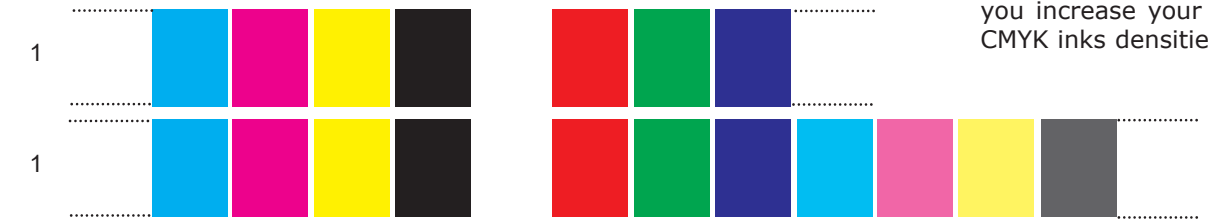
Corps 9 - Corps 9	Corps 3 - Corps 3
Corps 8 - Corps 8	Corps 4 - Corps 4
Corps 7 - Corps 7	Corps 5 - Corps 5
Corps 6 - Corps 6	Corps 6 - Corps 6
Corps 5 - Corps 5	Corps 7 - Corps 7
Corps 4 - Corps 4	Corps 8 - Corps 8
Corps 3 - Corps 3	Corps 9 - Corps 9



Colorsource ISO 12647-2-3-4-6-7 Print and Proof free Color Quality control bar: Can be freely incorporated into your CMYK print and proofs, and checked using your free Colorsource CMYK\_Print\_and\_Proof application.



**Step 1:** Measure **one** of the two CMYK charts below as spectral data for **MagicPress** application. First chart is OK for setting your solid inks densities matching any ISO12647-2-3-4-6 standard and controlling your superimpositions. We recommend using the second chart if you want to create your own CMYK standard, because its CMYK% patches allow you monitoring the CMYK print contrasts while you increase your solid CMYK inks densities.



**All-in one chart for MagicPress and MagicPrepress applications:** Place it easily on any production run using sheet fed or continuous print technologies.

**Step 2:** Below CMYK chart spectral data should be measured using X-Rite i1Pro 1, 2 or 3, or Techkon or Konica-Minolta 45/0° scanning spectrophotometers, after you have properly set your solid inks CMYK densities with MagicPress.

You should measure this test chart on many good copies before you save the spectral measurements file.

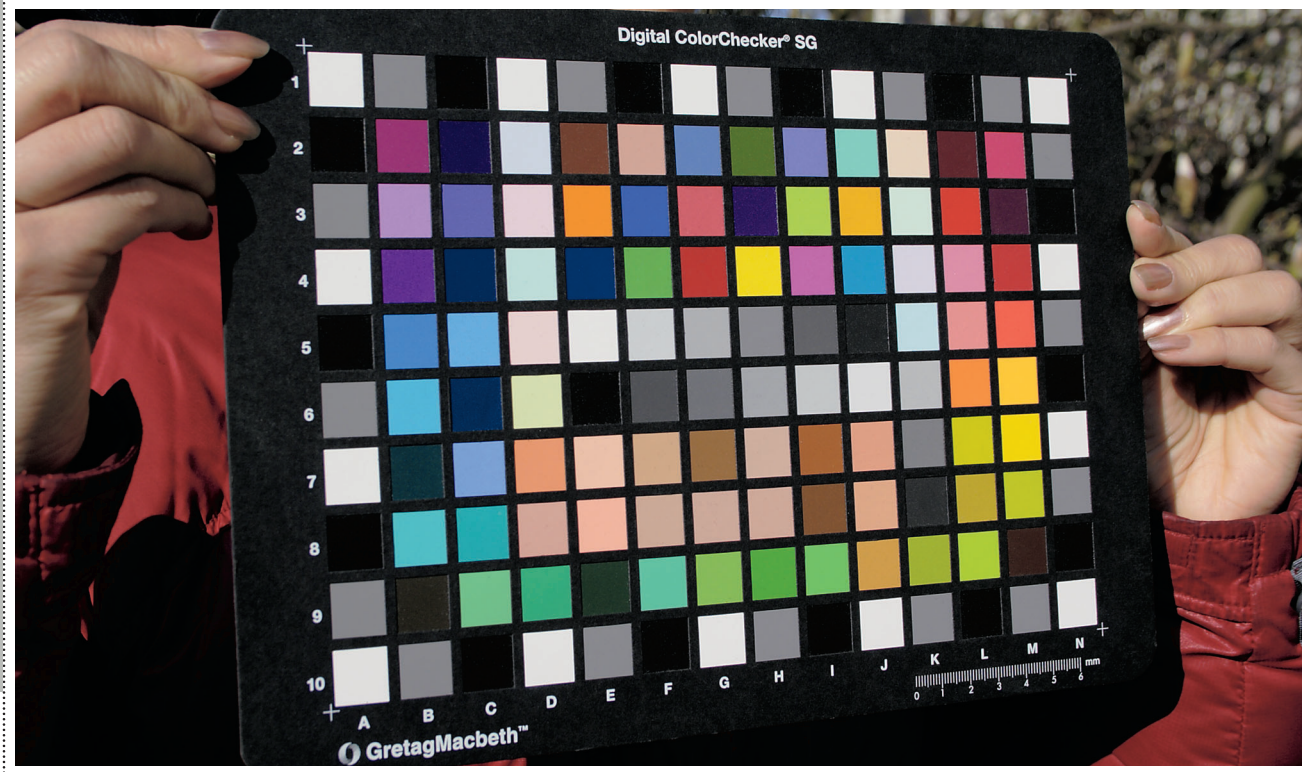
And then open it with **MagicPrepress** application :

Check visually Cyan % are pure:

Check visually Magenta % are pure:

Check visually Yellow % are pure:

Check visually Black % are pure:



Download Colorsource press setting software: [www.iso12647solution.com/Downloads\\_and\\_links.htm](http://www.iso12647solution.com/Downloads_and_links.htm)



Color separation are ISOcoated\_v2 with 300% maximal total coverage. Gray patches for visual control are only valid on thick matte or glossy coated paper with D50 light.



### ISOcoated\_v2 - D50

Neutral grays MaxK - NoK

	Max K	No K
L = 25		
L = 50		
L = 75		

**Visual control:** Check below high density and low density patches using a magnifier, in order to check small tones and maximal usable black or else ink limits to use in your CMYK ICC profiles:

10% 9 8 7 6 5 4 3 2 1 0 100 99 98 97 96 95 94 93 92 91 90%

**Step 0:** Check and/or calibrate your printing formes. For lithographic offset plates you can first produce only the black plate and use Colorsource **PLATE** software:

